

Specola Visiva

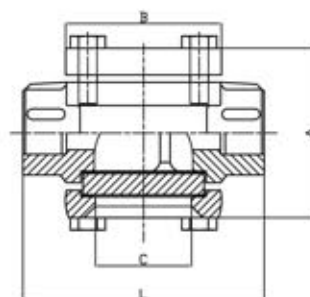
SPECOLE VISIVE FILETTATE THREADED SIGHT GLASSES

CARATTERISTICHE TECNICHE:

- CORPO IN ACCIAIO INOX AISI 316
- TENUTA: PTFE
- ESTREMI FILETTATI GAS FEMMINA
- PRESSIONE NOMINALE DI ESERCIZIO: 16 BAR
- TEMPERATURA MASSIMA DI ESERCIZIO: 240° C A 10 BAR

TECHNICAL FEATURES:

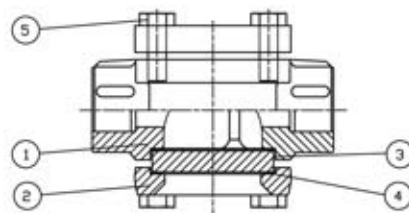
- BODY: STAINLESS STEEL AISI 316
- GASKET: PTFE
- THREADED ENDS: GAS FEMALE
- NOMINAL WORKING PRESSURE: 16 BAR
- MAXIMUM WORKING TEMPERATURE: 240° C AT 10 BAR



DIMENSIONI E PESI

DIMENSIONS AND WEIGHTS

Misura Size	DN	Dimensioni in mm Dimensions in mm				Vetro Glass	Peso in kg Weight in kg	Pezzi per scatola Carton quantity
		L	A	B	C			
1/2"	15	100	70	64	40	Ø 50 x 8	1,10	1
3/4"	20	100	70	64	40	Ø 50 x 8	1,05	1
1"	25	120	88	72	50	Ø 63 x 10	1,60	1
1 1/4"	32	120	88	72	50	Ø 63 x 10	1,75	1
1 1/2"	40	150	123	96	65	Ø 80 x 12	3,85	1
2"	50	150	123	96	65	Ø 80 x 12	4,00	1



CARATTERISTICHE COSTRUTTIVE

CONSTRUCTION FEATURES

N.	Componenti Components	Materiale Material
1	Corpo • Body	Acciaio Inox. Aisi 316 • SS 316
2	Coperchio • Cap	Acciaio Inox. Aisi 316 • SS 316
3	Vetro • Glass	Vetro temperato • Tempered glass
4	Tenuta • Gasket	PTFE
5	Vite • Bolt	Acciaio inox Aisi 304 • SS 304