



**CARATTERISTICHE TECNICHE:**

- VALVOLA DI RITEGNO A DISCO TIPO WAFER
- CORPO VALVOLA, DISCO E MOLLA IN ACCIAIO INOX AISI 316
- MONTAGGIO TRA FLANGE DIN PN16/40 E ANSI 150
- PRESSIONE NOMINALE DI ESERCIZIO: 40 BAR
- INSTALLAZIONE: ORIZZONTALE, VERTICALE O INCLINATA

**TECHNICAL FEATURES:**

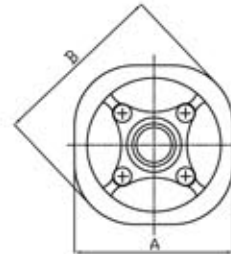
- WAFER CHECK VALVE (SINGLE DISC)
- BODY VALVE, DISC AND SPRING IN STAINLESS STEEL AISI 316
- ASSEMBLY BETWEEN FLANGES DIN PN 16/40 AND ANSI 150
- NOMINAL WORKING PRESSURE: 40 BAR
- INSTALLATION: HORIZONTAL, VERTICAL OR INCLINED FLOW



**DIMENSIONI E PESI**

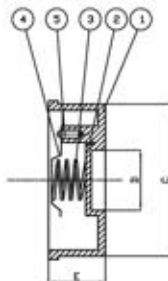
**DIMENSIONS AND WEIGHTS**

Misura Size	DN	Dimensioni in mm Dimensions in mm					Peso in gr Weight in gr	Pezzi per scatola Carton quantity
		A	B	C	D	E		
1/2"	15	45	53	43	15	16	120	1
3/4"	20	55	63	53	19	19	200	1
1"	25	65	73	63	24	22	290	1
1 1/4"	32	78	84	75	30	28	450	1
1 1/2"	40	88	94	86	38	32	630	1
2"	50	98	107	95	47	40	890	1
2 1/2"	65	118	126	115	62	46	1520	1
3"	80	134	144	131	76	50	2000	1
4"	100	154	164	151	95	60	3250	1

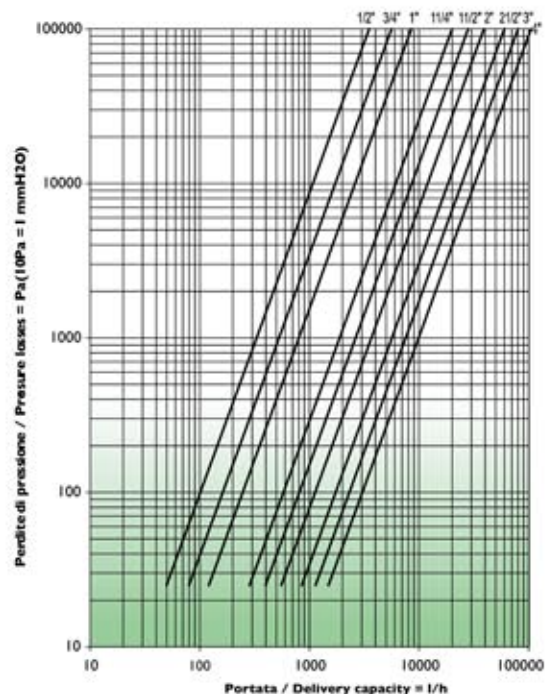


**CARATTERISTICHE COSTRUTTIVE  
CONSTRUCTION FEATURES**

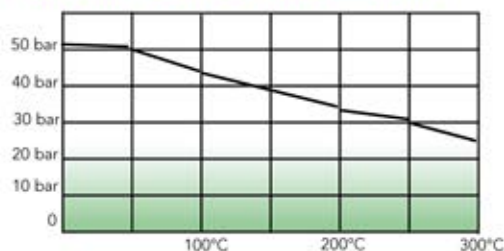
N.	Componenti Components	Materiale Material
1	Corpo Body	Acciaio Inox AISI 316 SS 316
2	Disco Disc	Acciaio Inox AISI 316 SS 316
3	Molla Spring	Acciaio Inox AISI 316 SS 316
4	Molla di tenuta Spring stop ring	Acciaio Inox AISI 316 SS 316



**DIAGRAMMA PERDITE DI CARICO  
FRICTION LOSSES DIAGRAM**



**DIAGRAMMA PRESSIONE - TEMPERATURA  
PRESSURE - TEMPERATURE DIAGRAM**



Valvole di ritegno